

Strengthen Our Community of Proficiency in Immune Monitoring

We offer proficiency testing worldwide as a non-profit service to those laboratories interested in evaluating their immune monitoring performance with the MHC multimer and T-cell ELISpot assays.

In 2013, Immudex was honored of coordinating all aspects of the proficiency panel program established by the US Cancer Immunotherapy Consortium [CIC] and European Association for Cancer Immunotherapy [CIMT].



Why Participate In A Proficiency Panel?



Confirm the reliability of your immune monitoring and assess it against a collaborative standard



Boost your credibility with sponsors and regulatory agencies



Guarantee compliance with CLIA and ISO 15189 recommendations



Ensure alignment with collaborators



Identify staff training or protocol optimization needs



Leverage a proficiency tool endorsed by leading scientific consortia

Participating is Simple

A test cycle takes 4 months to report delivery and results are anonymous.



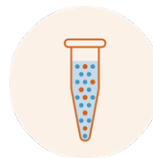
SIGN UP

Quickly register to participate in a test cycle. Your name and affiliation are kept anonymous



RECEIVE SAMPLES

All participants receive identical PBMC samples to analyze



ANALYZE SAMPLES

Use your lab-specific protocols to process the PBMC samples according to instructions



UPLOAD DATA

Report your results back to Immudex



RECEIVE REPORT

Receive a full report on the test cycle with anonymized performance of all participants

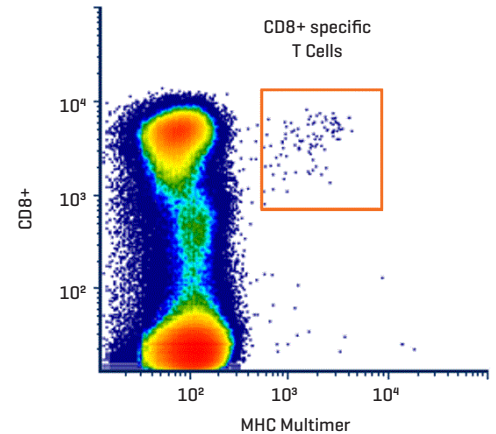
MHC Multimer Proficiency Panel

What You Receive

- PBMC samples: identical for all participants
- If requested, MHC Dextramer® reagents free of charge
- Assay instructions

What You Report

- Total number of CD8+ T-cells in samples
- Number of MHC multimer-positive CD8+ T-cells in samples
- Percent of total CD8+ T-cells that are MHC multimer-positive



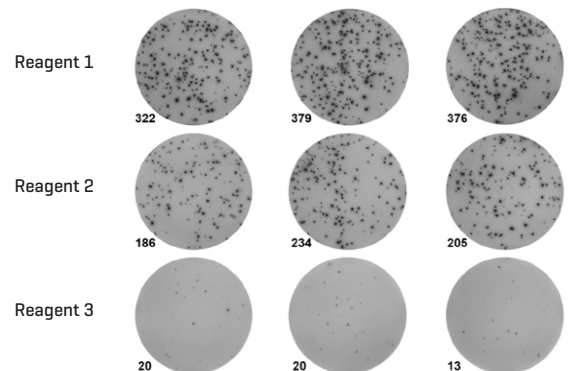
T-cell ELISpot Proficiency Panel

What You Receive

- PBMC samples: identical for all participants
- Peptide pools: PepMix™ HCMV [pp65] + CEFX Ultra SuperStim Pool
- Negative control reagent
- Assay instructions

What You Report

- Spot count per well after stimulation with either a peptide pool or a negative control reagent



Example on Data Performance

Relative accuracy	Definitions of the different ranges	Proficiency Score
0.66 - 1.5	within the average range	3
0.50 - 0.65 1.6 - 2.0	near the average range	2
< 0.50 > 2.0	far from the average range	1

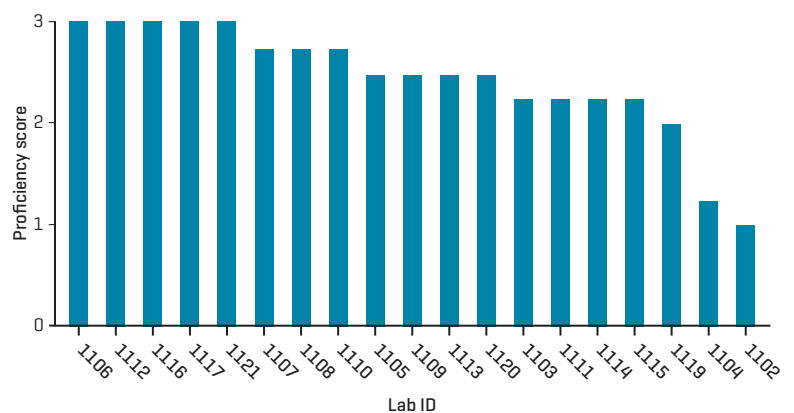


Figure 1. Overall proficiency score of the participants in the MHC Multimer Proficiency Panel 2020.

Do you want to learn more about how to ensure your proficiency in T-cell monitoring? Visit immudex.com/proficiencypanels

© Immudex ApS. Denmark, 2021

For research use only. Not for use in diagnostic or therapeutic procedures.